



EVO
FAIRFIELD



CONTENTS

PAGE 02

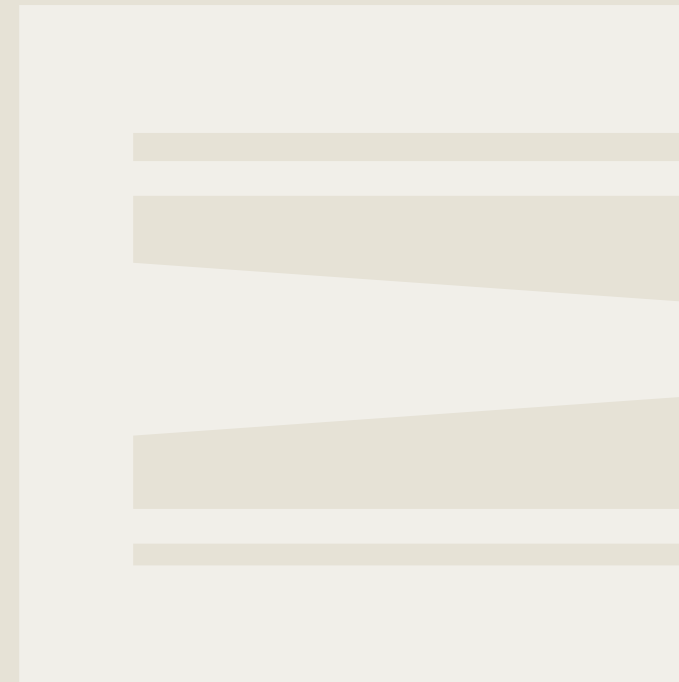
INTRODUCTION
**AN EXCITING
EVOLUTION**



PAGE 08

INVESTMENT
**FAIRFIELD
DEMOGRAPHICS**

PAGE 14
TRANSPORT
**A STRONG SENSE
OF CONNECTION**



PAGE 18
LIFESTYLE
**A FUSION
OF WORLDS**

PAGE 12
LOCATION
**THE WORLD
AT YOUR FEET**



PAGE 26
ARCHITECTURE
**ARCHITECTURAL
INNOVATION
AND VISIONARY
DESIGN**



AN EXCITING EVOLUTION

BRINGING A NEW LEVEL OF LUXURY TO THE AREA, EVO REPRESENTS THE SIGNIFICANT EVOLUTION AND TRANSFORMATION OF FAIRFIELD.

Acclaimed developers and architects Level 33 have brought this unique vision to life with a collection of four innovatively designed buildings set among beautifully landscaped surrounds, showcasing an exceptional calibre of craftsmanship and finishes.



Horsley Drive

THE BEATING HEART OF FAIRFIELD

WHERE ALL OF LIFE'S PLEASURES
LIE AT YOUR DOOR





A SMART INVESTMENT



FAIRFIELD DEMOGRAPHICS

STATISTICS OVER THE PAST 10 YEARS HIGHLIGHT THAT FAIRFIELD IS A SUBURB UNDERGOING CONTINUOUS GROWTH AND TRANSFORMATION.

Australian Bureau of Statistics (ABS) figures show that Fairfield’s population increased by 16.7% from 2006 to 2016, indicating that significant residential development has been undertaken to accommodate this growth.

The ABS also shows that in 2006, 46.9% of Fairfield homes were rented compared to 55% in 2016, indicating a growing investor market.

Professionals made up 13.9% of the Fairfield population in 2016 compared to 11.1% in 2006, highlighting a gradual change in residents’ employment activities. Couples and single parent families with children make up almost three quarters of the Fairfield population. This strong family dynamic is a primary driver of the abundance and calibre of schools and recreational attractions in the area.

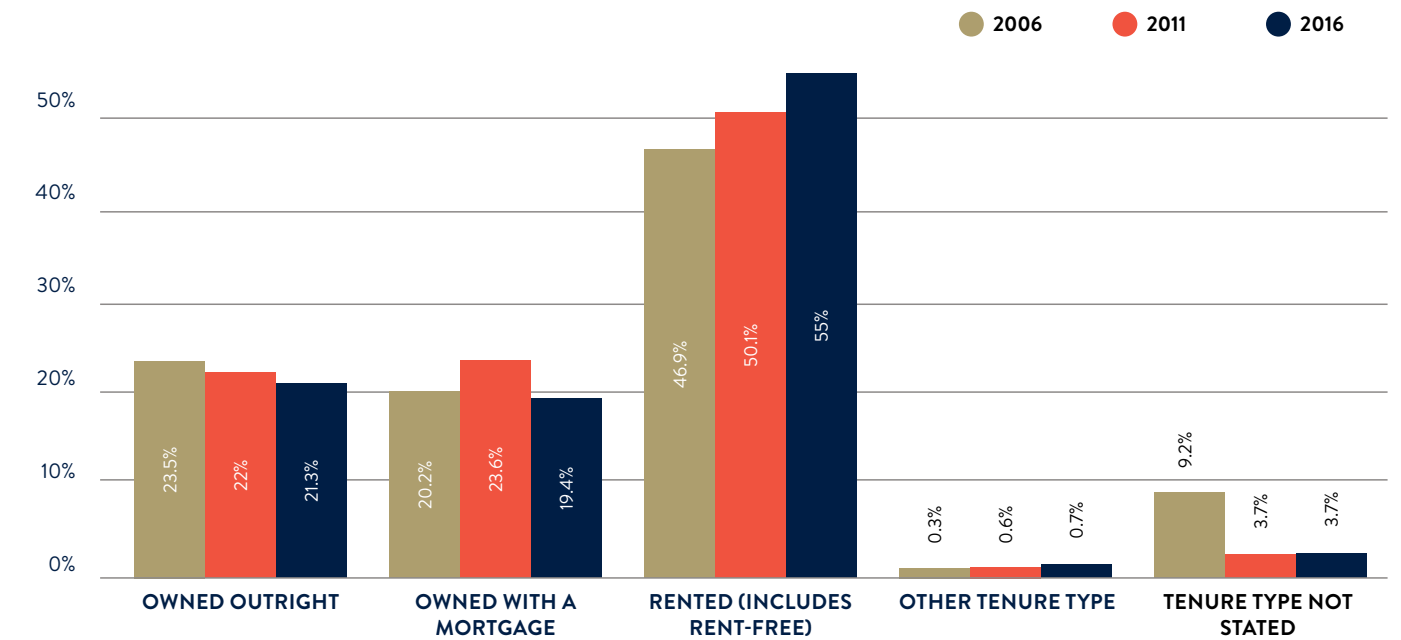


PEOPLE

	2006	2011	2016
NUMBER OF RESIDENTS	15,483	17,032	18,081
MALE	49.1%	48.9%	49.6%
FEMALE	50.9%	51.1%	50.4%
MEDIAN AGE	34	34	36

Source: Australian Bureau of Statistics

HOUSEHOLD TENURE



Source: Australian Bureau of Statistics

OCCUPATION

	% OF FAIRFIELD POPULATION 2006	% OF FAIRFIELD POPULATION 2011	% OF FAIRFIELD POPULATION 2016
LABOURERS	18.2	16.2	16
TECHNICIANS & TRADES WORKERS	17	15.7	15.5
PROFESSIONALS	11.1	13	13.9
CLERICAL & ADMINISTRATIVE WORKERS	15	14.4	13.1
MACHINERY OPERATORS & DRIVERS	12.7	13.5	12
COMMUNITY & PERSONAL SERVICE WORKERS	7.6	9.6	11.3
SALES WORKERS	8.7	8.6	8.8
MANAGERS	5.4	5.7	6.1

Source: Australian Bureau of Statistics

AREA PROFILE



4.4 km²

THE APPROX SIZE OF FAIRFIELD



16.7%

FAIRFIELD'S POPULATION GROWTH BETWEEN 2006 AND 2016, FROM 15,483 RESIDENTS TO 18,081



25-29

THE PREDOMINANT AGE GROUP IN FAIRFIELD, MAKING UP 8% OF THE POPULATION*



13.1%

THE PERCENTAGE OF RESIDENTS WITH AN EDUCATION FROM A UNIVERSITY OR TERTIARY INSTITUTION*

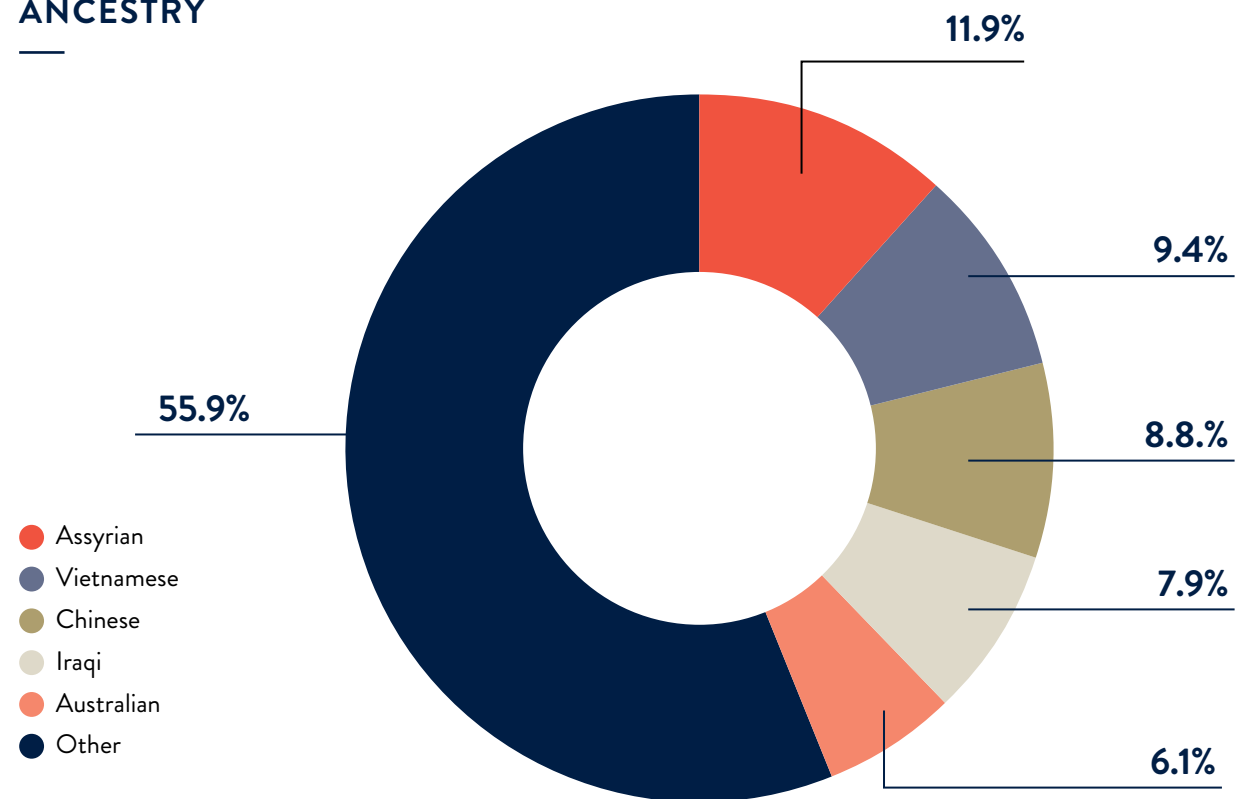


6

THE NUMBER OF SCHOOLS IN FAIRFIELD, INCLUDING PRIVATE AND PUBLIC INSTITUTIONS

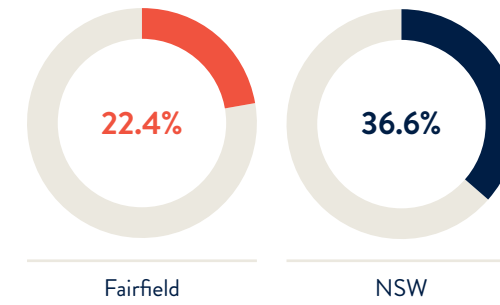
Source: Australian Bureau of Statistics 2016

ANCESTRY

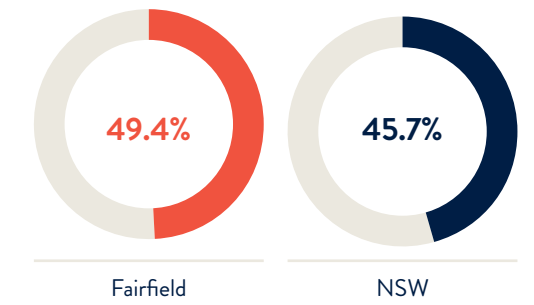


Source: Australian Bureau of Statistics 2016

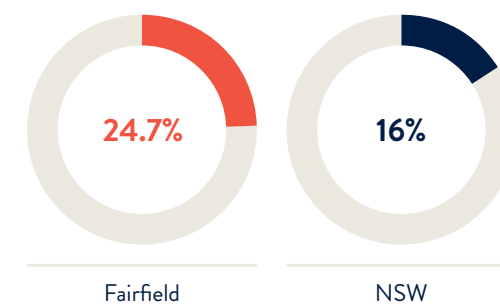
FAMILY COMPOSITION



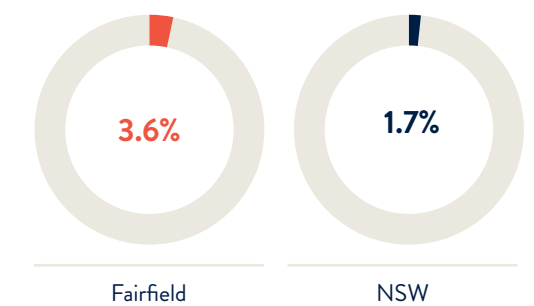
COUPLE FAMILY WITHOUT CHILDREN



COUPLE FAMILY WITH CHILDREN



ONE PARENT FAMILY



OTHER FAMILY

Source: Australian Bureau of Statistics 2016

THE FUTURE LOOKS BRIGHT FOR FAIRFIELD, WITH EVO PRESENTING A HIGHLY DESIRABLE PLACE TO LIVE OR INVEST.





PARRAMATTA CBD



WESTFIELD PARRAMATTA



FAIRFIELD HIGH SCHOOL



FAIRFIELD PUBLIC SCHOOL



NEETA CITY SHOPPING CENTRE

- Woolworths
- Best & Less
- Australia Post
- Commonwealth Bank
- ANZ Bank
- Westpac Bank

SYDNEY OLYMPIC PARK



ROSNAV GOLF CLUB



FAIRFIELD CHASE SHOPPING CENTRE



FAIRFIELD TRAIN STATION



FAIRFIELD RSL



MAKEPEACE OVAL



FAIRFIELD ADVENTURE PARK

SYDNEY CBD

THE WORLD AT YOUR FEET

Ease, convenience and vitality are key at EVO, where everything you need to make life enjoyable lies within walking distance, from transport, shopping, dining and entertainment to recreation and education.

A STRONG SENSE OF CONNECTION

Stroll just 350 metres to Fairfield train station and be in Parramatta in 15 minutes or take a 15 minute drive to the major commercial centre of Liverpool.

The world-class recreational attractions of Sydney Olympic Park are within easy reach. When it comes to shopping you're spoiled for choice, with Neeta City Shopping Centre directly opposite and a variety of local retail centres offering up everything from department stores, supermarkets and medical amenities to eateries and fresh produce. Local schools are highly regarded and Western Sydney University's Liverpool and Parramatta campuses are conveniently close by, as is TAFE Liverpool.



CONNECTIVITY

5 MIN
TO FAIRFIELD TRAIN STATION

15 MIN
TO PARRAMATTA

15 MIN
TO LIVERPOOL

40 MIN
TO SYDNEY OLYMPIC PARK

45 MIN
TO SYDNEY CBD

5 MIN
TO NEETA CITY SHOPPING CENTRE

12 MIN
TO WESTERN SYDNEY UNIVERSITY LIVERPOOL

20 MIN
TO WESTERN SYDNEY UNIVERSITY PARRAMATTA

20 MIN
TAFE LIVERPOOL



**EVO
FAIRFIELD**

AN AREA OF IMMENSE GROWTH AND TRANSFORMATION, FAIRFIELD IS A WONDERFULLY ACCESSIBLE, VIBRANT PLACE TO LIVE, WORK AND PLAY.

TRAIN STATION

- 1 Fairfield Train Station

CAFE/RESTAURANT/BAR

- 2 Fairfield RSL Club
 - La Tratt Restaurant
 - Summer House Restaurant
 - Pho@Fairfield Restaurant
 - The Peninsula Cafe
 - Jersey Bar Restaurant
 - Chartreuse Lounge Bar
 - Sweet Child of Mine

- 3 De Mustachio

- 4 The Usual Cafe

SHOPPING

- 5 Neeta City Shopping Centre
- 6 Fairfield Forum
- 7 Cabramatta Shopping Centre
- 8 Westfield Parramatta
- 9 Westfield Liverpool
- 10 Costco

PARKS

- 11 Fairfield Adventure Park
- 12 Makepeace Oval
- 13 Endeavour Sports Park
- 14 Western Sydney Parklands

LEISURE

- 15 Woodville Golf Course
- 16 Rosnay Golf Club
- 17 Cabramatta Golf Club
- 18 Fairfield Golf Course
- 19 Cumberland Country Golf Club
- 20 Liverpool Golf Club

HOSPITALS

- 21 Fairfield Hospital
- 22 Holroyd Private Hospital
- 23 St Joseph's Hospital
- 24 Westmead Hospital
- 25 Liverpool Hospital

SCHOOLS

- 26 Fairfield Public School
- 27 Fairfield High School
- 28 Our Lady of the Rosary Catholic School
- 29 Fairfield Heights Public School
- 30 Western Sydney University Liverpool
- 31 TAFE Liverpool
- 32 Western Sydney University Parramatta

OTHER

- 33 Sydney Olympic Park

A FUSION OF WORLDS



A CULINARY AND CULTURAL JOURNEY



Fairfield is renowned for its global cuisine and colourful dining scene. Head to the nearby Fairfield RSL, a culinary hotspot home to a host of popular eateries, from Italian and Vietnamese to modern Australian and a Parisian-inspired cocktail lounge. Dotted around the neighbourhood you'll find welcoming casual cafes and restaurants such as the much-loved De Mustachio.

SUMMER HOUSE, FAIRFIELD RSL



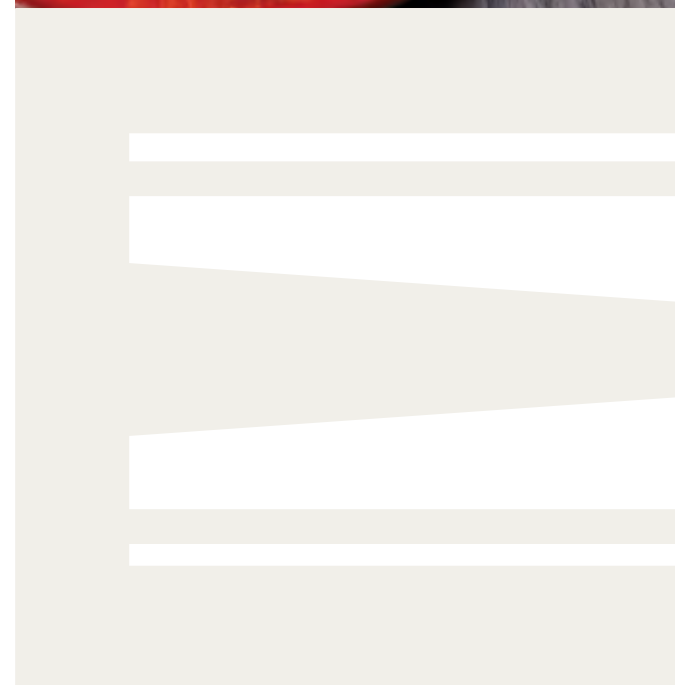
Fairfield is also a beloved destination for arts and culture, with residents celebrating a wide array of annual festivals with much delight, embracing diversity and traditions.



PHO@FAIRFIELD, FAIRFIELD RSL



DE MUSTACHIO





GREEN AND SERENE



HAPPINESS AND WELLBEING LIE AT THE HEART OF FAIRFIELD LIFE



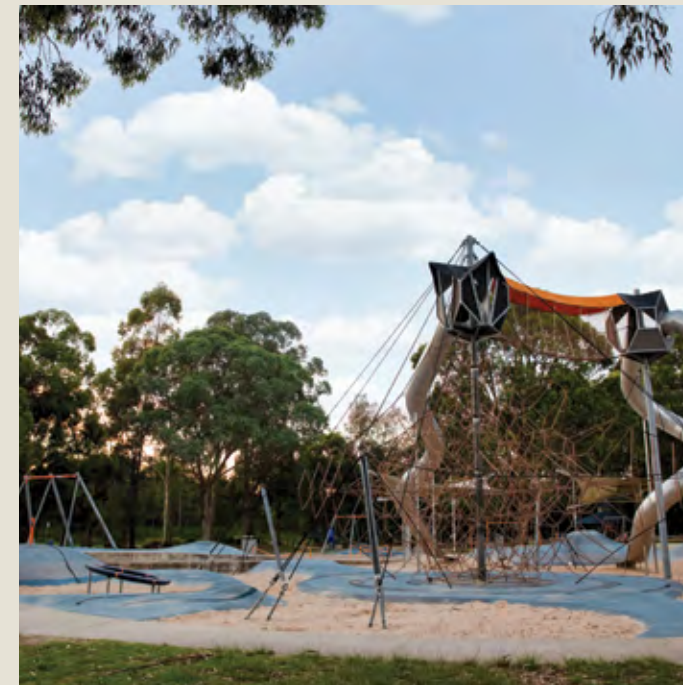
Covering 5280ha, Western Sydney Parklands is a recreational wonderland just waiting to be explored, with more than 60km of tracks and trails, playgrounds, picnic areas, ropes courses and more. It's also home to Sydney Zoo, where you can enjoy an immersive animal experience amid native bushland surrounds.

LAKE GILLAWARNA



Golfing enthusiasts can play 18 holes at Fairfield Golf Course or Woodville Golf Course while Fairfield Leisure Centre is one of the area's leading sporting facilities, with a gym, indoor and outdoor pools and an Aqua Play Water Park for the kids.

Local parks are abundant, with Endeavour Sports Park containing bike paths and sports fields and the popular Fairfield Adventure Park offering up a world of fun for kids of all ages.



FAIRFIELD ADVENTURE PARK



WOODVILLE GOLF COURSE



ARCHITECTURAL INNOVATION AND VISIONARY DESIGN



**EVO'S FOUR 11-STOREY BUILDINGS CONTAIN
A COLLECTION OF CAREFULLY CONSIDERED
ONE, TWO AND THREE-BEDROOM APARTMENTS,
A SELECT NUMBER FEATURING A UNIQUE
DOUBLE-STOREY CONFIGURATION.**

Ambient living spaces flow seamlessly to generous balconies or private courtyard gardens which provide an inviting environment for alfresco entertaining. The apartments command views from a variety of aspects, with many taking in vistas of Parramatta, the city skyline or the Blue Mountains to the west. Café and retail spaces at ground level bring life and vitality to the building.



Court Road

ESCAPE TO AN ALFRESCO SANCTUARY

A beautifully landscaped podium garden at the heart of the development provides a serene haven of greenery where you can relax, unwind, meet friends or get to know your neighbours. Two of the buildings feature extensively landscaped roof top terraces, creating sanctuaries in the sky with sweeping district, city and Blue Mountains views from their elevated vantage point.





HARMONIOUS COMMUNITY



MAKE A BOLD IMPRESSION

EVO'S INTERIORS ARE INFUSED
WITH STYLE AND SOPHISTICATION





Split Level Apartment



Living Room

TIMBER FLOORBOARDS, FLOOR-TO-CEILING
GLASS AND BEAUTIFUL FINISHES CREATE
WARM, INVITING SPACES WHERE YOU'LL
LOVE TO ENTERTAIN.

A PERFECT FUSION OF FORM AND FUNCTION

Kitchens are as beautiful as they are functional, with Tundra Grey stone benchtops and splashbacks complemented by charcoal-hued oak-finish cabinetry that runs full height for maximum storage.

Forming the heart of the home, the stunning island benches are designed to be multi-functional – a place for preparing meals, informal dining or simply gathering with family and friends. Quality Franke stainless steel appliances include a gas stove and integrated dishwasher.



Kitchen



DESIGNER BATHROOMS

Bathrooms are a contrast of tones and textures, creating visually interesting spaces that are sleek and modern. Grey floor and vanity feature wall tiles are complemented by large-format white wall tiles for a thoroughly contemporary aesthetic, enhanced by wall-hung vanities and mirrored cabinetry.

LEVEL 33 DEVELOPER

Experts in premium multi-residential and commercial projects, Level 33 specialises in all areas of the construction process, assigning the most experienced, talented professionals to suit every individual project. Undertaking developments with skill, care and meticulous attention to detail, they believe that outstanding design is the foundation for every exceptional project. Founded in Sydney in 1999, they have a dedicated design team accomplished at making clients' ideas a reality, injecting their signature originality while showcasing innovation, quality and an understanding of the local environment and community.



ST TRINITY PROJECT MARKETER & SALES

St Trinity Property Group is a Sydney based diversified property group established in the early '90s. It has successfully brought to market more than \$1 billion worth of sustainable residential communities. The group prides itself on its intricate knowledge and deep entrenchment in the communities it services, playing an integral role in the local market. Its experienced team of dedicated professionals has a substantial depth of knowledge and great passion. A multi-disciplinary background allows them to successfully deliver an exceptional, highly tailored service to clients and provide the perfect synergy with their requirements.



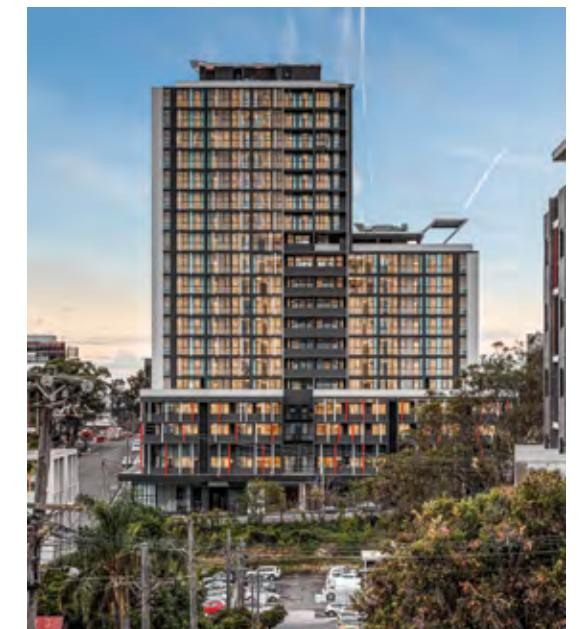
BURNHAM, CARLTON



ELITE, LEWISHAM



KOGARAH CENTRAL



SKYE TOWER, WOLLONGONG

EVOFAIRFIELD.COM.AU
1300 622 662

PROUDLY DEVELOPED BY

LEVEL 

PROUDLY MARKETED BY

ST TRINITY